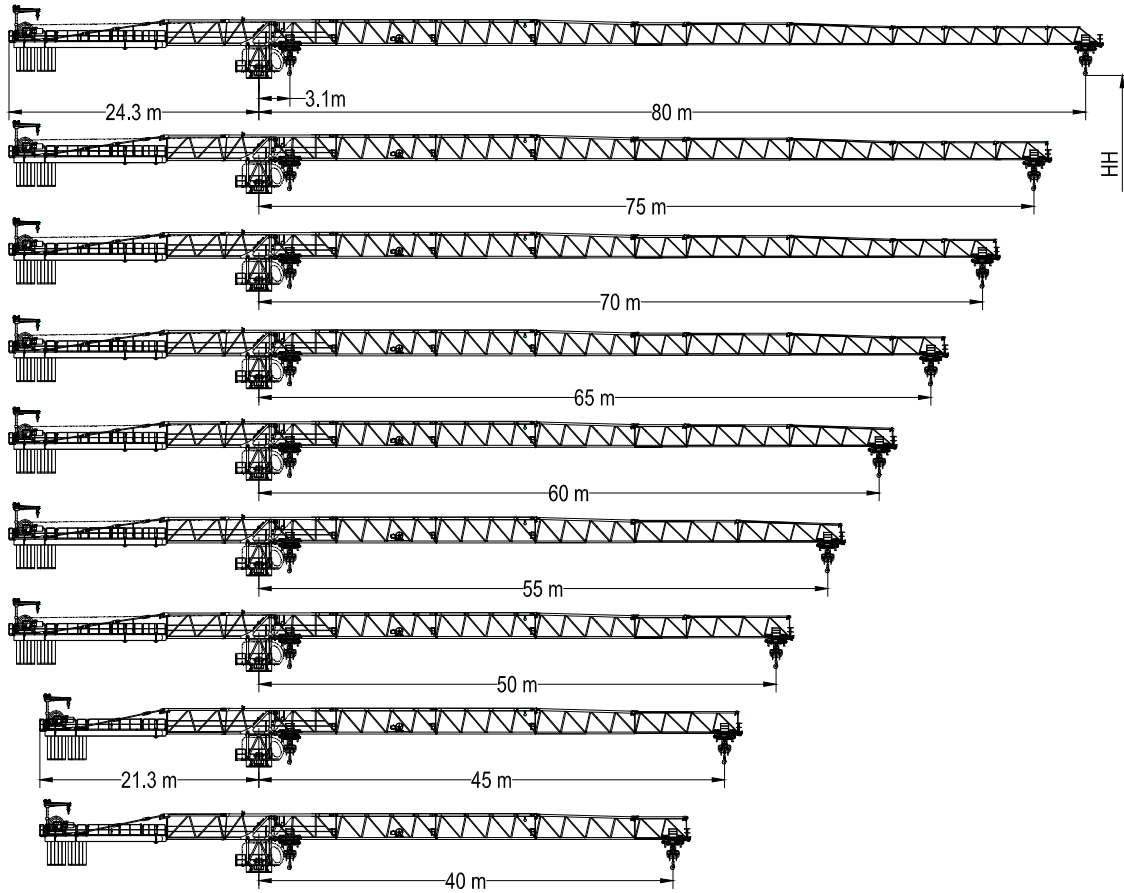


JT558-24 平头式起重机

Topless Crane

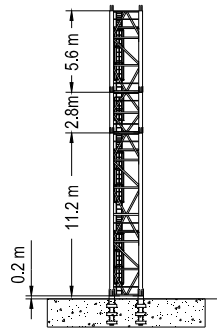
起重臂与平衡臂 Jib and Counter Jib



起重性能 Load Diagrams

JIB 起重臂	Max.load 最大起重重量	Jib Reach 臂长															
		t	m	15	20	25	30	35	40	45	50	55	60	65	70	75	80
80m	☺	12.00	31.10	12.00	12.00	12.00	12.00	10.43	8.88	7.69	6.73	5.96	5.31	4.77	4.31	3.90	3.55
	☹	24.00	16.76	24.00	19.53	15.00	12.04	9.95	8.40	7.20	6.25	5.48	4.83	4.29	3.82	3.42	3.07
75m	☺	12.00	33.02	12.00	12.00	12.00	12.00	11.20	9.55	8.28	7.27	6.44	5.76	5.18	4.68	4.26	
	☹	24.00	17.76	24.00	20.91	16.09	12.94	10.72	9.07	7.80	6.79	5.96	5.27	4.70	4.20	3.78	
70m	☺	12.00	36.99	12.00	12.00	12.00	12.00	10.94	9.51	8.37	7.45	6.67	6.02	5.47			
	☹	24.00	19.83	24.00	23.77	18.36	14.82	12.32	10.46	9.03	7.89	6.96	6.19	5.54	4.99		
65m	☺	12.00	38.40	12.00	12.00	12.00	12.00	11.44	9.95	8.77	7.80	7.00	6.33				
	☹	24.00	20.57	24.00	24.00	19.16	15.48	12.89	10.96	9.47	8.29	7.32	6.52	5.85			
60m	☺	12.00	45.45	12.00	12.00	12.00	12.00	12.00	12.00	12.00	10.73	9.58	8.63				
	☹	24.00	24.25	24.00	24.00	23.18	18.81	15.72	13.43	11.66	10.25	9.10	8.15				
55m	☺	12.00	45.68	12.00	12.00	12.00	12.00	12.00	12.00	12.00	10.80	9.64					
	☹	24.00	24.37	24.00	24.00	23.31	18.91	15.81	13.51	11.73	10.13	9.16					
50m	☺	12.00	46.99	12.00	12.00	12.00	12.00	12.00	12.00	12.00	11.16						
	☹	24.00	25.05	24.00	24.00	24.00	19.53	16.34	13.97	12.14	10.68						
45m	☺	12.00	45.00	12.00	12.00	12.00	12.00	12.00	12.00	12.00							
	☹	24.00	25.52	24.00	24.00	24.00	19.95	16.70	14.28	12.41							
40m	☺	12.00	40.00	12.00	12.00	12.00	12.00	12.00	12.00								
	☹	24.00	25.66	24.00	24.00	24.00	20.08	16.80	14.37								

塔身 Tower



UTH20.5

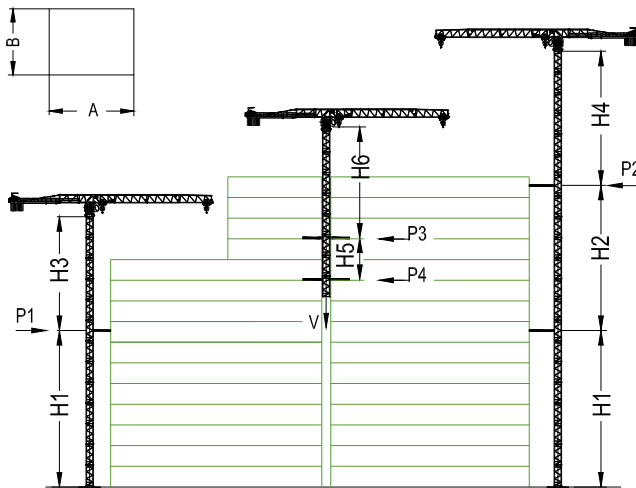
Tower configuration
塔身组成

臂长 (m) Jib reach (m)	基础节 BM1	标准节 SM1	标准节 SM2	标准节高度(m) TH (m)	吊钩高度(m) HH (m)
40~80	1	1	10	70.20	71.80

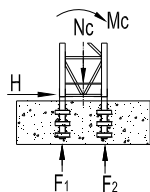
- BM1 → 基础节1 Base mast UTH20.5B H=11.20m
- SM1 → 标准节1 Stand mast UTH20.5S H=2.80m
- SM2 → 标准节2 Stand mast UTH20.5L H=5.60m

爬升 Climbing

- 外附式 External
- 内爬式 Internal
- (仅举例) (example only)



塔身 Tower		UTH20.5		
臂长 Jib reach		40-80m		
			工作状态 In service	非工作状态 Out of service
H1	m	57.1	—	—
H2	m	50.4	—	—
H3	m	63.5	—	—
H4	m	63.5	—	—
H5	m	13.0	—	—
H6	m	29.8	—	—
P1	kN	—	188	487
P2	kN	—	182	473
P3	kN	—	374	185
P4	kN	—	328	185
V	kg	—	183,100	153,100
A	—	2.9	—	—
B	—	2.4	—	—

基础 Foundation

 Static Crane
 固定式起重机

Tower 塔身	HH (m) 高度 (m)	Jib reach (m) 臂长 (m)	Foundation loading 基础载荷			Corner forces 地脚反力	
			Mc (kN.m)	Nc (kN)	H (kN)	F ₁ (kN)	F ₂ (kN)
UTH20.5	71.8	40~80	6271	2255	214	-1653	2781

运输 Shipping

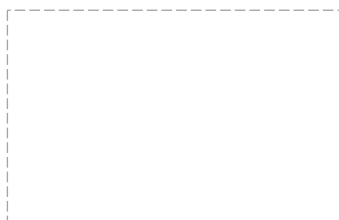
塔身 Tower	高度 (m) TH (m)	臂长 (m) jib length(m)	集装箱数量 Container QTY				
			FR	40'OP	40'HQ	40'GP	20'GP
UTH20.5	70.20	80			17		

机构性能 Mechanisms Specification

机构性能 Mechanisms Specification			Ⓢ				Ⓢ				功率 Power (kw)	扭矩 Torque (Nm)		
起升 Hoisting	Ⓢ	150LVF65	m/min	124.0	93.0	62.0	62.0	46.5	31.0	1030m	75×2	—		
			t	4.2	8.0	12.0	8.4	16.0	24.0					
起升 Hoisting	Ⓢ	90LVF65	m/min	150.0	112.7	75.1	35.0	75.1	56.4	37.6	17.5	1030m	90	—
			t	1.3	3.2	5.2	12.0	2.7	6.5	10.4	24.0			
变幅 Trolleying	Ⓢ	11DVF10	m/min	0~80						11	—			
回转 Slewing	Ⓢ	RVF70×4	rpm	0.64						—	70×4			
电源 Power Supply			380V / 50Hz											
总功率 Necessary Electric Power			203kVA (150kw) / 133kVA (90kw)											

*数据可能有所调整，以产品说明书为准。

*Relative parameter might be adjusted. Final parameter is subject to its instruction manual.



地 址：沈阳市沈河区青年大街 35 号 邮编：110014
 Address: No. 35 Qingnian Street, Shenhe District,
 Shenyang, 110014 P.R. China
 电话 (Tel) : +86-24-25104568
 传真 (Fax) : +86-24-89255527
 Email: useter@hotmail.com http://www.useter.com