

## UTL320-18 Luffing Crane

### Standards and technical specifications

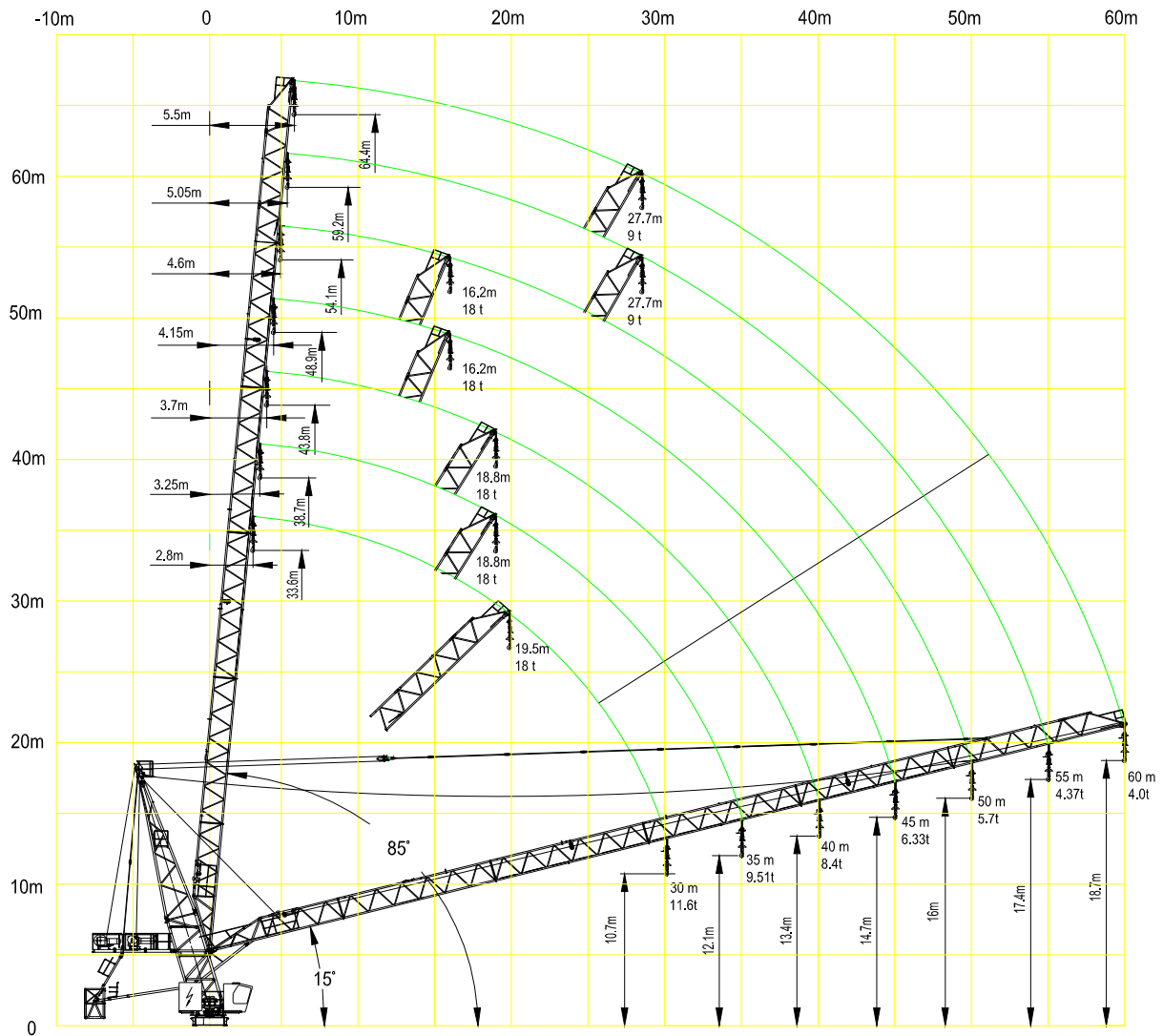
- EN 14439
- EN 60204
- FEM1.001/1.005
- ISO9001:2008

Tested By TUV

Type Approved By Singapore  
No:TCA13012



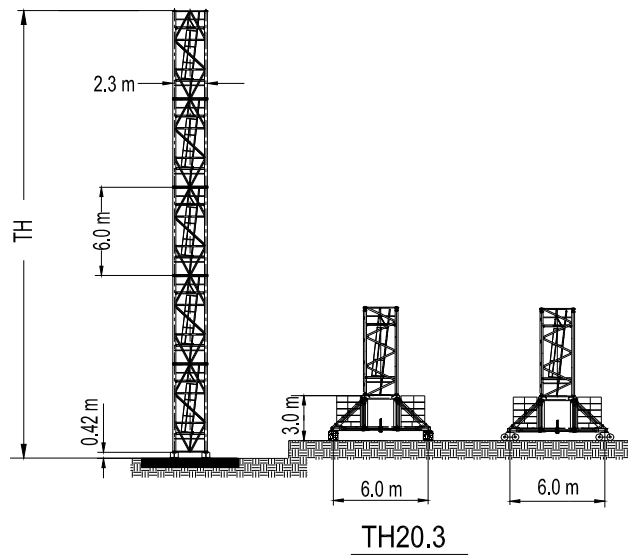
## Luffing Jib



## Load Capacity

JIB	Max.load		Jib Reach										
	t	m	18	20	25	30	35	40	45	50	55	60	
60m		9.00	27.69	9.00	9.00	9.00	8.28	7.06	6.13	5.41	4.84	4.37	4.00
		—	—	—	—	—	—	—	—	—	—	—	—
55m		9.00	27.69	9.00	9.00	9.00	8.28	7.06	6.13	5.41	4.84	4.37	—
		—	—	—	—	—	—	—	—	—	—	—	—
50m		9.00	32.13	9.00	9.00	9.00	9.00	8.23	7.16	6.33	5.70	—	—
		18.00	16.23	16.17	14.50	11.48	9.48	8.04	6.97	6.13	5.50	—	—
45m		9.00	32.13	9.00	9.00	9.00	9.00	8.23	7.16	6.33	—	—	—
		18.00	16.23	16.17	14.50	11.48	9.48	8.04	6.97	6.13	—	—	—
40m		9.00	37.21	9.00	9.00	9.00	9.00	9.00	8.40	—	—	—	—
		18.00	18.77	18.00	16.82	13.33	11.08	9.51	8.20	—	—	—	—
35m		9.00	37.21	9.00	9.00	9.00	9.00	9.00	—	—	—	—	—
		18.00	18.77	18.00	16.82	13.33	11.08	9.51	—	—	—	—	—
30m		9.00	30.00	9.00	9.00	9.00	9.00	—	—	—	—	—	—
		18.00	19.54	18.00	17.57	13.94	11.60	—	—	—	—	—	—

## Tower



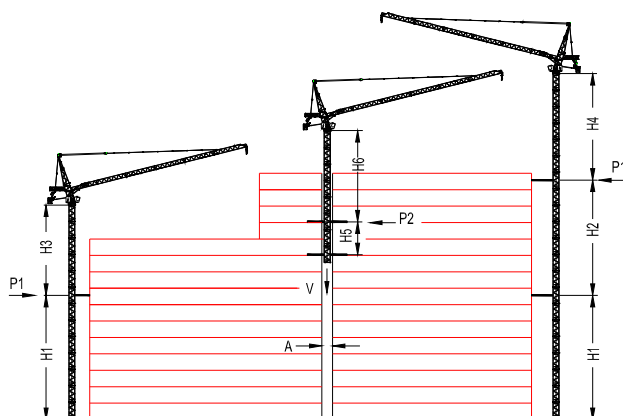
Tower configuration

No.	Tower	Base mast 1	Base mast 2	Mast	HT (m)	Jib reach (m)
1	TH20.3			7	42.2	50-60
2	TH20.3			8	48.2	30-40

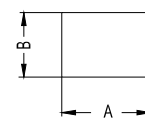
Note: TH20.3 is equivalent to UTS20.18.

## Climbing

External  
Internal  
(example only)



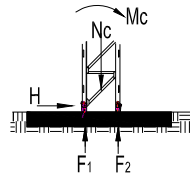
Tower	TH20.3		
	m	In service	Out of service
		t	t
H1	33.4	—	—
H2	30.4	—	—
H3	38.8	—	—
H4	32.8	—	—
H5	14.0	—	—
H6	28.0	—	—
P1	—	18.5	23.6
P2	—	20.8	25.3
V	—	105.2	89.2
A	2,6		
B	2,6		



## Main Parts List

Part	Piece	Description	Diagram		L (m)	B (m)	H (m)	Kg*
			L	B				
UPPORT PART	1	Jib section 1			9.22	1.88	1.58	1750
	1	Jib section 2			10.30	1.88	1.58	1223
	1	Jib section 3			10.35	1.88	1.58	999
	1	Jib section 4			10.35	1.88	1.58	999
	1	Jib section 5			10.35	1.88	1.58	904
	1	Jib section 6			11.73	1.88	1.68	1273
	1	Counter jib			4.17	3.21	0.60	1224
	1	Hoist unit + rope			3.04	2.03	1.83	5126
	1	Luffing unit + rope			2.67	1.83	1.09	2987
	1	Tower top - bottom part			7.20	2.16	2.59	3320
	1	Tower top - upper part			11.38	2.60	2.24	4014
	1	Turntable + slewing unit			2.94	2.84	2.06	6033
	1	Platform with control houses + cabin			4.00	2.10	2.69	2000
	1	Basket			2.16	1.34	2.45	626
	1	Bracket			4.80	1.95	1.22	296
	1	Swing			3.95	2.26	0.22	455
	1	Moving bar			5.45	2.06	0.19	296
	6	Ballast plate			1.85	1.20	0.24	3300
	4	Ballast plate			1.85	1.20	0.18	2500
	1	Tie bars - Jib ( bundle )			34.34	0.15	0.26	590
	1	Tie bars - counter jib ( bundle )			12.28	0.15	0.15	300
	1	Platform counter jib			5.56	0.77	1.23	169
	1	Platform counter jib			6.14	0.77	1.23	191
	1	Platform tower top			2.60	1.06	1.18	90
	1	Platform tower top			2.23	0.90	1.18	60
	1	Counter Weight			1.835	1.185	0.18	2500
1	1.835				1.185	0.24	3300	
TOWER PART	1	Telescoping Cage			3.26	3.0	11.87	11221
	1	Fixing Anchor			0.61	0.61	2.31	410
	1	Tower TH20.3			6.00	2.20	2.25	3834
	1	Base mast TH20.3B			6.00	2.56	2.25	4376

## Foundation



Static Crane

Tower	HT (m)	Jib reach (m)	Foundation loading			Corner forces	
			Mc (kN.m)	Nc (kN)	H (kN)	F <sub>1</sub> (kN)	F <sub>2</sub> (kN)
TH20.3	42.0	60	7660	1115	181.4	-2429	2987
TH20.3	48.0	40	7025	1140	179.0	-2199	2769

## Mechanisms Specification

Mechanisms Specification												KW
Hoisting		75LVF45 (50Hz)	m / min	86.0	64.0	43.0	43.0	32.0	21.5	600 m	75	
			t	2.25	6.0	9.0	4.5	9.0	18.0			
	75LVF45 (25Hz)	m / min	165.0	124.0	82.9	41.4	82.6	62	41.3	20.7	900 m	75
		t	1.0	2.1	3.5	9.0	2.0	4.2	7.0	18.0		
Luffing		55FVF48	min	15°~85° t=1.50							55	
Slewing		95RVFx2	r / min	0.67							95Nm x 2	
Travelling		6RTVF4	m / min	25							5.5 x 4	
Power Supply				415V 50Hz / 440V 60Hz								
Necessary Electric Power				138 kw (163kVA) / 300A								
Generator Recommendation				326 kVA								

## Shipping

Tower	HT (m)	Container QTY			
		FR	40'OP	40'HQ	20'GP
TH20.3	42.0			10	1

**\*Relative parameter might be adjusted. Final parameter is subject to its instruction manual.**

H. Office: No. 35 Qingnian Street, Shenhe District ,  
Shenyang, 110014 P.R. China  
Factory: 31A, No.26 Central Avenue South,Zhangshi Economic  
DevelopmentZone, Shenyang,  
Tel: +86-24-22745018 Fax: +86-24-22745017  
Email: useter@hotmail.com http://www.useter.com