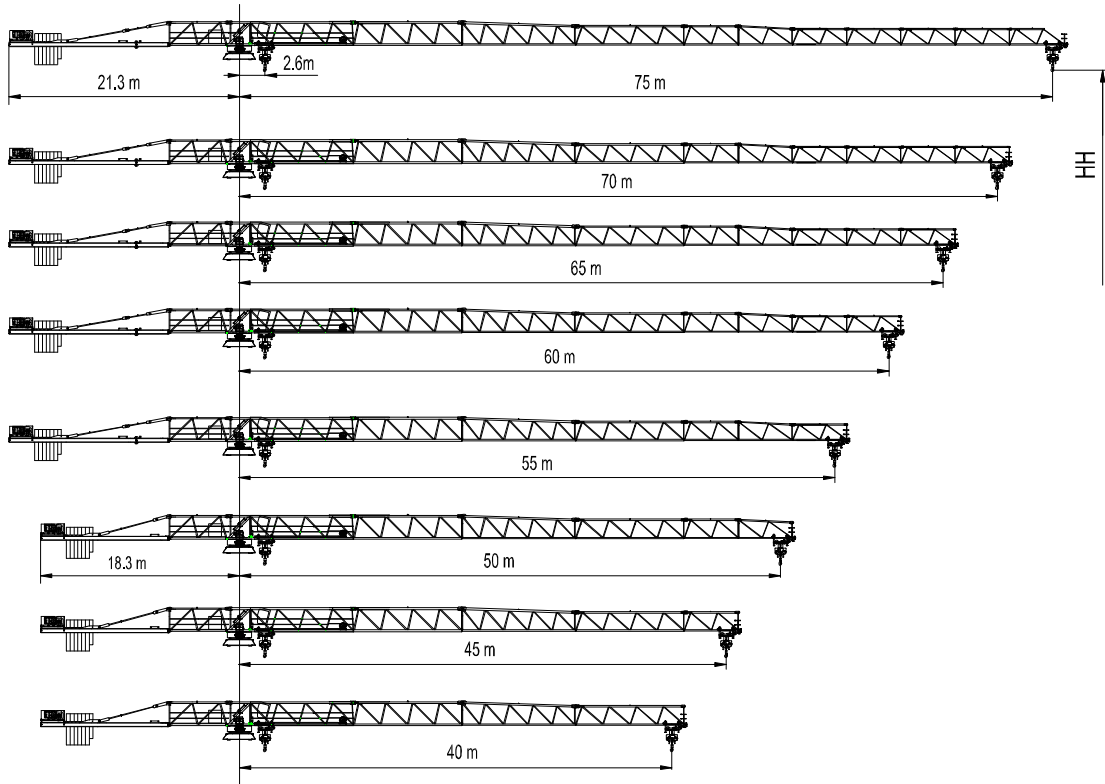


JT302-18 平头式起重机
Topless Crane

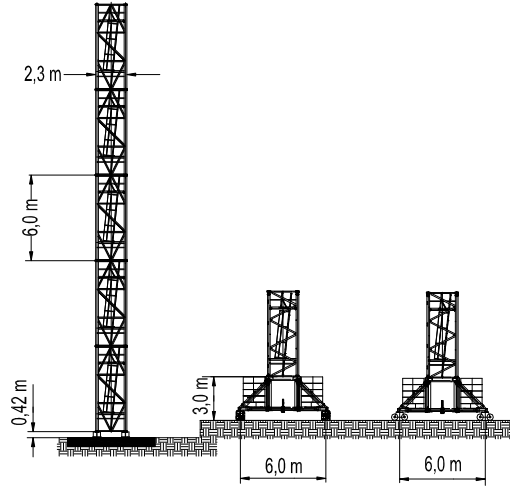
起重臂与平衡臂 Jib and Counter Jib



起重性能 Load Capacity

JIB 起重臂	Max.load 最大起重量		Jib Reach 臂长												
	t	m	15	20	25	30	35	40	45	50	55	60	65	70	75
75m	9.00	26.2	9.00	9.00	9.00	7.36	6.16	5.27	4.58	4.03	3.58	3.21	2.90	2.63	2.40
	18.00	12.7	15.92	11.44	8.82	7.10	5.89	4.99	4.30	3.75	3.29	2.92	2.60	2.33	2.10
70m	9.00	29.3	9.00	9.00	9.00	8.38	7.06	6.06	5.28	4.67	4.17	3.75	3.40	3.10	
	18.00	14.4	15.80	12.87	9.97	8.08	6.74	5.74	4.97	4.36	3.86	3.45	3.10	2.80	
65m	9.00	31.0	9.00	9.00	9.00	9.00	7.58	6.52	5.70	5.05	4.51	4.07	3.70		
	18.00	15.7	18.00	13.98	10.88	8.84	7.40	6.34	5.51	4.85	4.32	3.88	3.50		
60m	9.00	32.2	9.00	9.00	9.00	9.00	7.97	6.86	6.00	5.32	4.76	4.30			
	18.00	16.4	18.00	14.68	11.43	9.30	7.79	6.68	5.81	5.13	4.57	4.10			
55m	9.00	34.2	9.00	9.00	9.00	9.00	8.37	7.19	6.29	5.58	5.00				
	18.00	17.0	18.00	15.35	11.96	9.74	8.17	7.00	6.10	5.38	4.80				
50m	9.00	34.2	9.00	9.00	9.00	9.00	8.68	7.47	6.54	5.80					
	18.00	17.6	16.00	15.90	12.40	10.10	8.48	7.27	6.34	5.60					
45m	9.00	35.1	9.00	9.00	9.00	9.00	9.00	7.76	6.80						
	18.00	18.2	18.00	18.00	12.87	10.49	8.81	7.56	6.60						
40m	9.00	35.3	9.00	9.00	9.00	9.00	9.00	7.80							
	18.00	18.2	18.00	18.00	12.93	10.54	8.85	7.60							

塔身 Tower



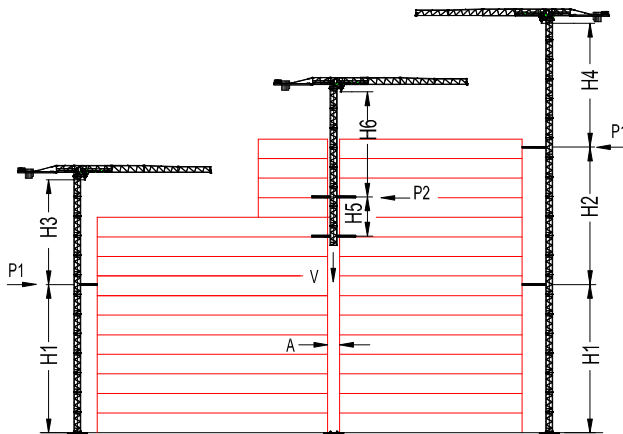
TH20.3

Tower configuration
塔身组成

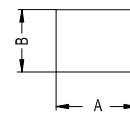
No. 序号	Tower 塔身	Base mast 1 基础节 1	Base mast 2 基础节 2	Adapter 过渡节	Mast 标节	HH (m) 高度 (m)	Jib reach (m) 臂长 (m)
1	TH20.3				10	59.0	40-75

爬升 Climbing

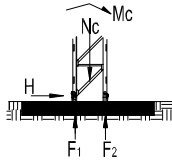
外爬式 External
内爬式 Internal
(仅举例) (example only)



Tower 塔身	TH20.3		
	m	In service 工作状态 t	Out of service 非工作状态 t
H1	47,2	—	—
H2	36,0	—	—
H3	51,8	—	—
H4	45,8	—	—
H5	14,0	—	—
H6	32,8	—	—
P1	—	23,0	26,0
P2	—	22,0	25,0
V	—	102,0	90,0
A	2,6		
B	2,6		



基础 Foundation



Static Crane
固定式起重机

Tower 塔身	HH (m) 高度(m)	Jib reach (m) 臂长(m)	Foundation loading 基础载荷			Corner forces 地脚反力	
			Mc (kN.m)	Nc (kN)	H (kN)	F ₁ (kN)	F ₂ (kN)
TH20.3	59.0	75	6650	865	178.9	-2135	2559
L68B2	51.5	75	5680	842	164.3	-1798	2218

运输 Shipping

Tower 塔身	HH (m) 高度(m)	Container QTY 集装箱数量			
		FR	40'OP	40'HQ	20'GP
TH20.3	59.0			13	
L68B2	51.5			10	

机构性能 Mechanisms Specification

机构性能 Mechanisms Specification										KW
起升 Hoisting		75LVF45	m / min 76.0	64.0	38.0	38.0	32.0	19.0	500 m	75
			t 4.0	6.0	9.0	8.0	12.0	18.0		
变幅 Trolleying		6T3V7	m / min	65						185 Nm
		8DVF7	m / min	74						7.5
回转 Slewing		RZV95x3	r / min	0.67						95 Nm ^{x3}
行走 Travelling		5RTVF4	m / min	25						5.5x4
电源 Power Supply			380V 50Hz / 440V 60Hz							
总功率 Necessary Electric Power			103 kVA							

*数据可能有所调整，以产品说明书为准。

*Relative parameter might be adjusted. Final parameter is subject to its instruction manual.

公司地址：沈阳市沈河区青年大街 35 号 邮编：110014

H. Office: No. 35 Qingnian Street, Shenhe District,
Shenyang, 110014 P.R. China

工厂地址：沈阳市东陵区榆林南路 7-2 号 邮编：110045

Factory: No. 7-2 Yulin Nan Road, Dongling District,
Shenyang, 110045 P.R. China

电话 (Tel) : +86-24-22745018 传真 (Fax) : +86-24-22745017

Email: useter@hotmail.com

<http://www.useter.com>