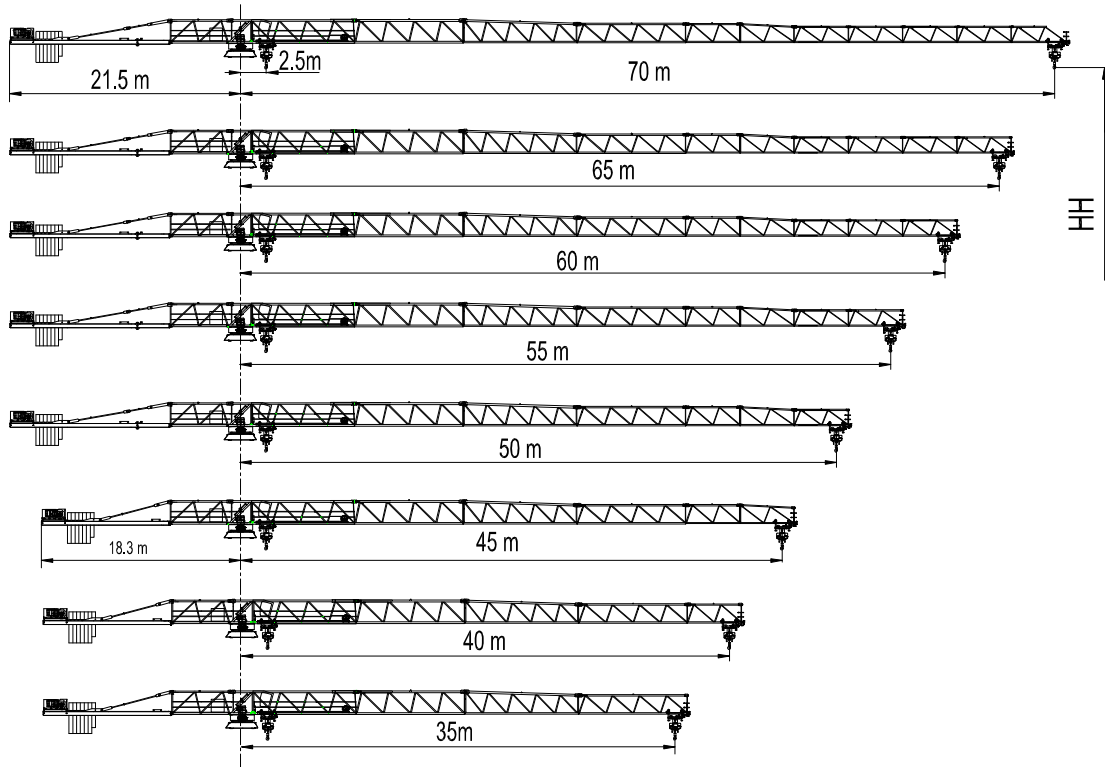


JT262-12 平头式起重机 Topless Crane

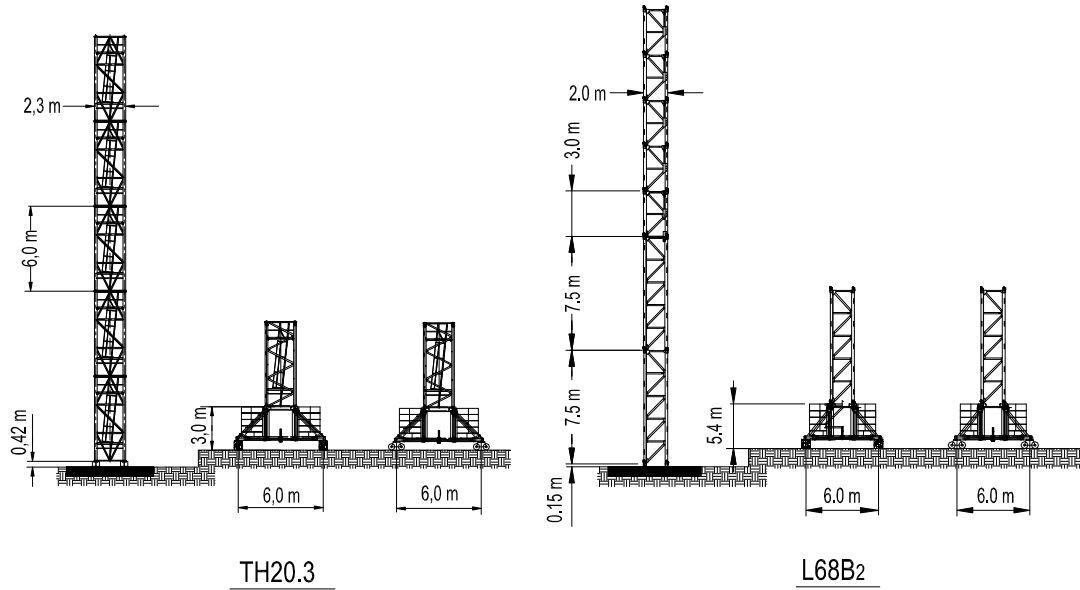
起重臂与平衡臂 Jib and Counter Jib



起重性能 Load Capacity

JIB 起重臂	Max.load 最大起重重量	Jib Reach 臂长														
		t	m	15	18	20	25	30	35	40	45	50	55	60	65	70
70m	☞	6.00	33.8	6.00	6.00	6.00	6.00	6.00	5.76	4.94	4.30	3.79	3.38	3.04	2.75	2.50
	☜	12.00	18.1	12.00	12.00	10.72	8.30	6.71	5.59	4.76	4.12	3.61	3.19	2.84	2.55	2.30
65m	☞	6.00	37.0	6.00	6.00	6.00	6.00	6.00	6.00	5.48	4.79	4.24	3.79	3.42	3.10	
	☜	12.00	19.6	12.00	12.00	11.71	9.10	7.39	6.18	5.28	4.59	4.04	3.59	3.22	2.90	
60m	☞	6.00	39.3	6.00	6.00	6.00	6.00	6.00	6.00	5.89	5.16	4.57	4.10	3.70		
	☜	12.00	20.6	12.00	12.00	12.00	9.68	7.89	6.62	5.67	4.95	4.37	3.89	3.50		
55m	☞	6.00	41.0	6.00	6.00	6.00	6.00	6.00	6.00	6.00	5.41	4.80	4.30			
	☜	12.00	21.5	12.00	12.00	12.00	10.15	8.27	6.95	5.96	5.20	4.59	4.10			
50m	☞	6.00	42.5	6.00	6.00	6.00	6.00	6.00	6.00	6.00	5.63	5.00				
	☜	12.00	22.3	12.00	12.00	12.00	10.57	8.62	7.24	6.22	5.43	4.80				
45m	☞	6.00	43.7	6.00	6.00	6.00	6.00	6.00	6.00	6.00	5.80					
	☜	12.00	22.5	12.00	12.00	12.00	10.88	8.88	7.46	6.41	5.60					
40m	☞	6.00	40.0	6.00	6.00	6.00	6.00	6.00	6.00	6.00						
	☜	12.00	23.2	12.00	12.00	12.00	11.03	9.00	7.56	6.50						
35m	☞	6.00	35.0	6.00	6.00	6.00	6.00	6.00	6.00							
	☜	12.00	23.5	12.00	12.00	12.00	11.22	9.16	7.70							

塔身 Tower

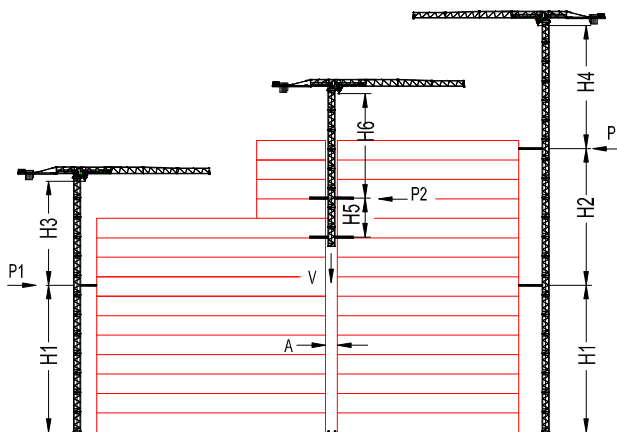


Tower configuration
塔身组成

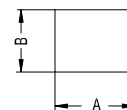
No. 序号	Tower 塔身	Base mast 1 基础节 1	Base mast 2 基础节 2	Adapter 过渡节	Mast 标节	HH (m) 高度 (m)	Jib reach (m) 臂长 (m)
1	TH20.3				10	59.0	35-70
2	L68B2	1	1	1	12	51.5	35-70

爬升 Climbing

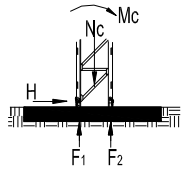
外爬式 External
内爬式 Internal
(仅举例) (example only)



Tower 塔身	TH20.3			L68B2		
	m	In service 工作状态 t	Out of service 非工作状态 t	m	In service 工作状态 t	Out of service 非工作状态 t
H1	54,2	—	—	40,5	—	—
H2	48,0	—	—	27,0	—	—
H3	58,8	—	—	35,5	—	—
H4	52,8	—	—	35,5	—	—
H5	14,0	—	—	14,0	—	—
H6	32,8	—	—	21,0	—	—
P1	—	21,0	25,0	—	12,8	20,5
P2	—	21,0	24,0	—	16,2	22,5
V	—	94,5	82,5	—	88,8	76,8
A	2,6			2,6		
B	2,6			2,2		



基础 Foundation



Static Crane
固定式起重机

Tower 塔身	HH (m) 高度(m)	Jib reach (m) 臂长(m)	Foundation loading 基础载荷			Corner forces 地脚反力	
			Mc (kN.m)	Nc (kN)	H (kN)	F ₁ (kN)	F ₂ (kN)
TH20.3	59.0	70	5912	895	182.4	-1867	2313
L68B2	51.5	70	5505	833	164.3	-1738	2154

运输 Shipping

Tower 塔身	HH (m) 高度 (m)	Container QTY 集装箱数量			
		FR	40'OP	40'HQ	20'GP
TH20.3	59.0	/	/	13	1
L68B2	51.5	/	/	10	/

机构性能 Mechanisms Specification

机构性能 Mechanisms Specification										KW	
起升 Hoisting		55LVF30	m / min	86.0	64.5	43.0	43.0	32.2	21.5	500 m	55
			t	2.8	3.8	6.0	5.6	7.6	12.0		
	45LVF30	m / min	70.4	52.8	35.3	35.2	26.4	17.6	450 m	45	
		t	2.5	3.8	6.0	5.0	7.6	12.0			
变幅 Trolleying		5T3V5	m / min	63						120 Nm	
		5DVF5	m / min	65						5.5	
回转 Slewing		RZV95x3	r / min	0.67						95Nm x 3	
行走 Travelling		5RTVF4	m / min	25						5.5 x 4	
电源 Power Supply			380V 50Hz / 440V 60Hz								
总功率 Necessary Electric Power			78.8 kVA / 67.0 kVA								

*数据可能有所调整，以产品说明书为准。

*Relative parameter might be adjusted. Final parameter is subject to its instruction manual.

公司地址：沈阳市沈河区青年大街 35 号 邮编：110014

H. Office: No. 35 Qingnian Street, Shenhe District,
Shenyang, 110014 P.R. China

工厂地址：沈阳市东陵区榆林南路 7-2 号 邮编：110045

Factory: No. 7-2 Yulin Nan Road, Dongling District,
Shenyang, 110045 P.R. China

电话 (Tel) : +86-24-22745018 传真 (Fax) : +86-24-22745017

Email: usetter@hotmail.com

<http://www.usetter.com>