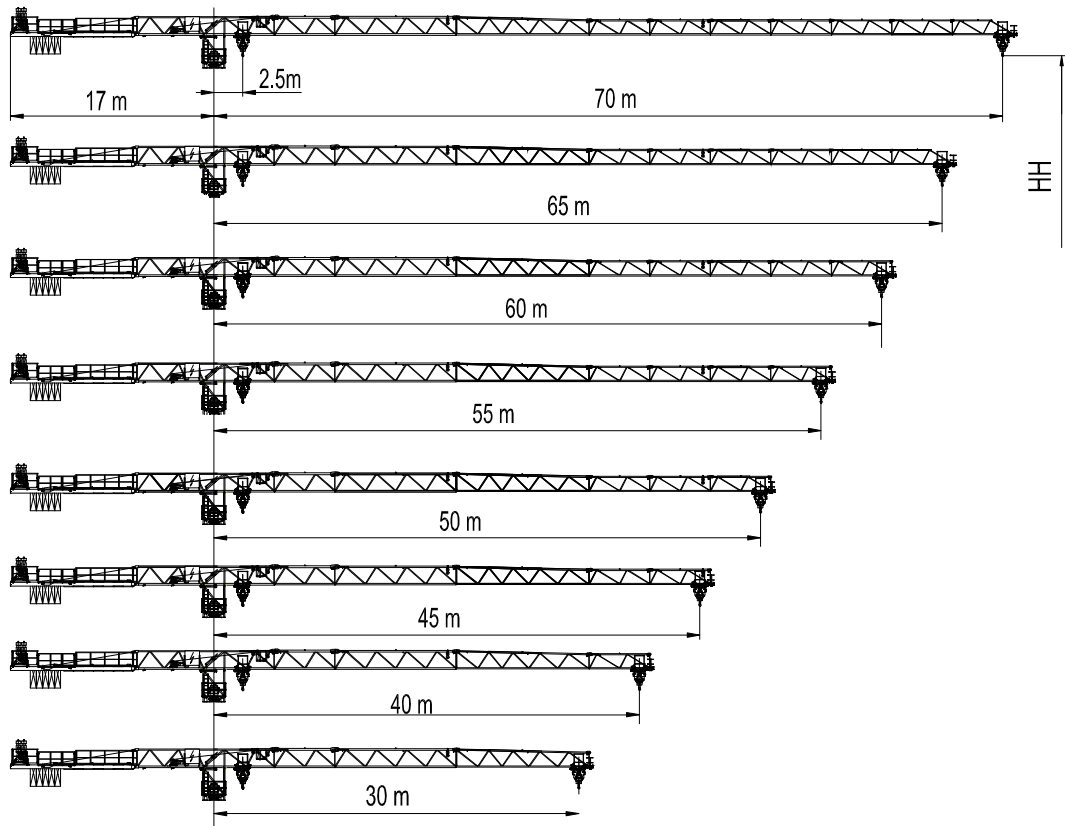


JT192-8 平头式起重机
Topless Crane

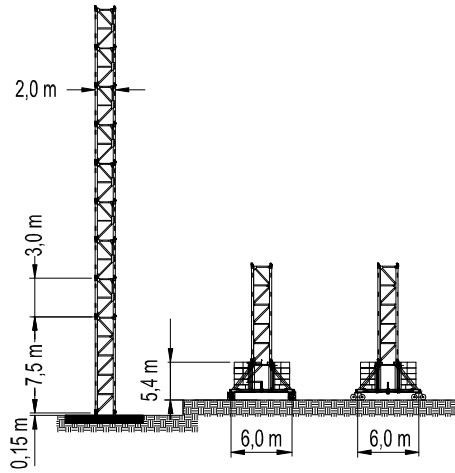
起重臂与平衡臂 Jib and Counter Jib



起重性能 Load Capacity

JIB 起重臂		Max.load 最大起重量		Jib Reach(m) 臂长(m)											
		t	m	18	20	25	30	35	40	45	50	55	60	65	70
70m		4.00	33.1	4.00	4.00	4.00	4.00	3.75	3.19	2.75	2.40	2.11	1.88	1.67	1.50
		8.00	17.6	7.80	6.93	5.35	4.80	3.55	2.99	2.55	2.20	1.91	1.68	1.47	1.30
65m		4.00	37.6	4.00	4.00	4.00	4.00	4.00	3.72	3.22	2.83	2.50	2.23	2.00	
		8.00	19.9	8.00	7.99	6.20	5.01	4.16	3.52	3.02	2.63	2.30	2.03	1.80	
60m		4.00	38.5	4.00	4.00	4.00	4.00	4.00	3.83	3.32	2.91	2.58	2.30		
		8.00	20.4	8.00	8.00	6.37	5.15	4.28	3.63	3.12	2.71	2.38	2.10		
55m		4.00	41.1	4.00	4.00	4.00	4.00	4.00	4.00	3.59	3.16	2.80			
		8.00	21.8	8.00	8.00	6.86	5.56	4.63	3.80	3.39	2.96	2.60			
50m		4.00	43.6	4.00	4.00	4.00	4.00	4.00	4.00	3.86	3.40				
		8.00	23.1	8.00	8.00	7.35	5.97	4.98	4.24	3.66	3.20				
45m		4.00	45.0	4.00	4.00	4.00	4.00	4.00	4.00	4.00					
		8.00	23.8	8.00	8.00	7.60	6.18	5.16	4.39	3.80					
40m		4.00	40.0	4.00	4.00	4.00	4.00	4.00	4.00						
		8.00	24.8	8.00	8.00	7.93	6.45	5.39	4.60						
30m		4.00	30.0	4.00	4.00	4.00	4.00								
		8.00	24.6	8.00	8.00	7.87	6.40								

塔身 Tower



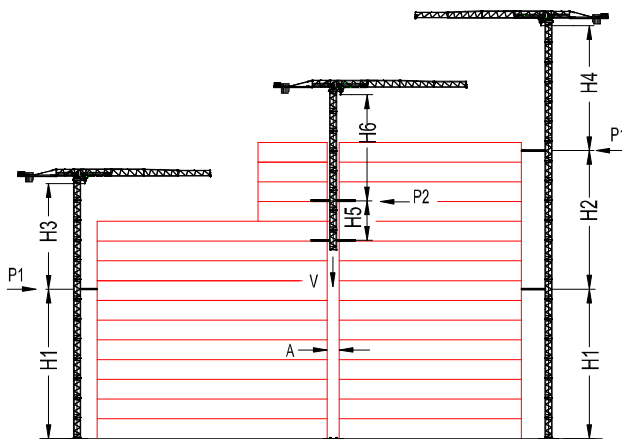
L68A

Tower configuration
塔身组成

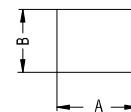
No. 序号	Tower 塔身	Base mast 基础节	Mast 标节	HH (m) 高度 (m)	Jib reach (m) 臂长 (m)
1	L68A	1	17	60.5	30-70

爬升 Climbing

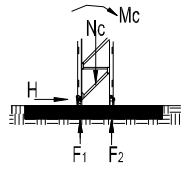
外爬式 External
内爬式 Internal
(仅举例) (example only)



Tower 塔身	L68A		
	m	In service 工作状态	Out of service 非工作状态
		t	t
H1	48,0	—	—
H2	36,0	—	—
H3	48,5	—	—
H4	48,5	—	—
H5	18,0	—	—
H6	33,5	—	—
P1	—	12,5	32,4
P2	—	16,5	34,9
V	—	82,2	72,2
A	2,6		
B	2,2		



基础 Foundation



Static Crane
固定式起重机

Tower 塔身	HH (m) 高度(m)	Jib reach (m) 臂长(m)	Foundation loading 基础载荷			Corner forces 地脚反力	
			Mc (kN.m)	Nc (kN)	H (kN)	F ₁ (kN)	F ₂ (kN)
L68A	60.5	70	5614	815	151	-1781	2189

运输 Shipping

Tower 塔身	HH (m) 高度 (m)	Container QTY 集装箱数量			
		FR	40'OP	40'HQ	20'GP
L68A	60.5			7	

机构性能 Mechanisms Specification

机构性能 Mechanisms Specification										KW	
起升 Hoisting		24PLC20	m / min	60.0	30.0	6.5	30.0	15.0	3.20	340 m	24/24/4.5
			t	2.0	4.0	4.0	4.0	8.0	8.0		
变幅 Trolleying		30RW20	m / min	68.0	51.0	34.0	34.0	25.5	17.0	450 m	30
			t	1.75	2.5	4.0	3.5	5.0	8.0		
回转 Slewing		4T3V4	m / min	0 - 58						95Nm	
行走 Travelling		RZV95x3	r / min	0.64						95Nm x 3	
		4RTVF4	m / min	22						4 x 4	
电源 Power Supply			380V 50Hz / 440V 60Hz								
总功率 Necessary Electric Power			42.3kVA / 49.4 kVA								

*数据可能有所调整，以产品说明书为准。

*Relative parameter might be adjusted. Final parameter is subject to its instruction manual.

公司地址：沈阳市沈河区青年大街 35 号 邮编：110014

H. Office: No. 35 Qingnian Street, Shenhe District,
Shenyang, 110014 P.R. China

工厂地址：沈阳市东陵区榆林南路 7-2 号 邮编：110045

Factory: No. 7-2 Yulin Nan Road, Dongling District,
Shenyang, 110045 P.R. China

电话 (Tel) : +86-24-22745018 传真 (Fax) : +86-24-22745017

Email: useter@hotmail.com

<http://www.useter.com>