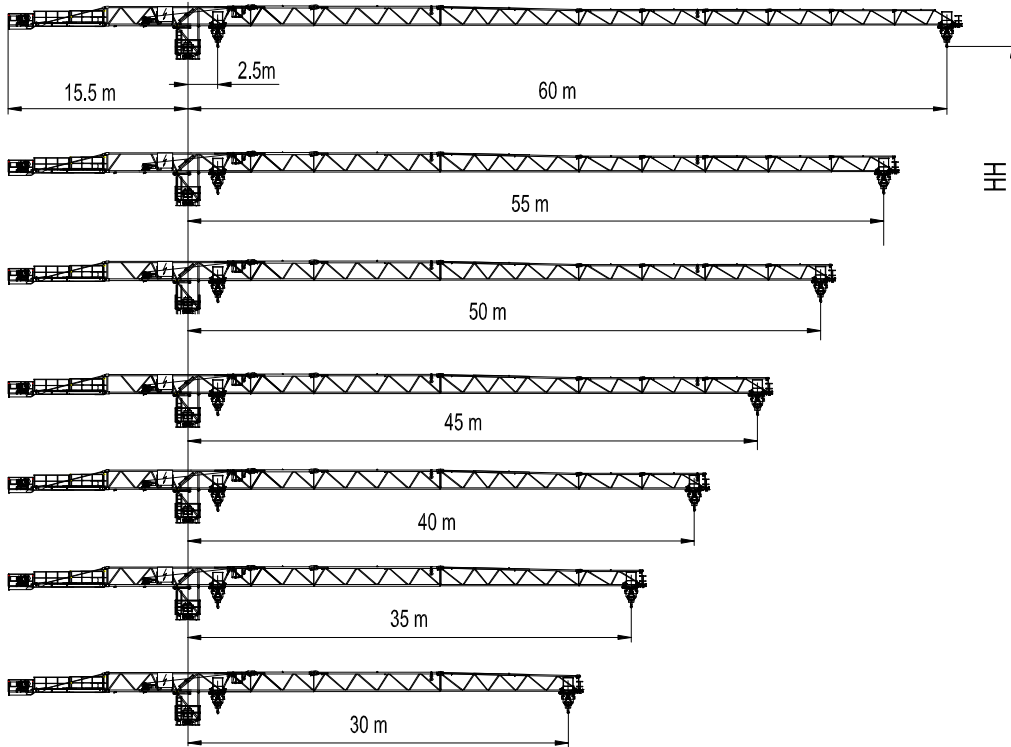


# JT142-10 平头式起重机 Topless Crane

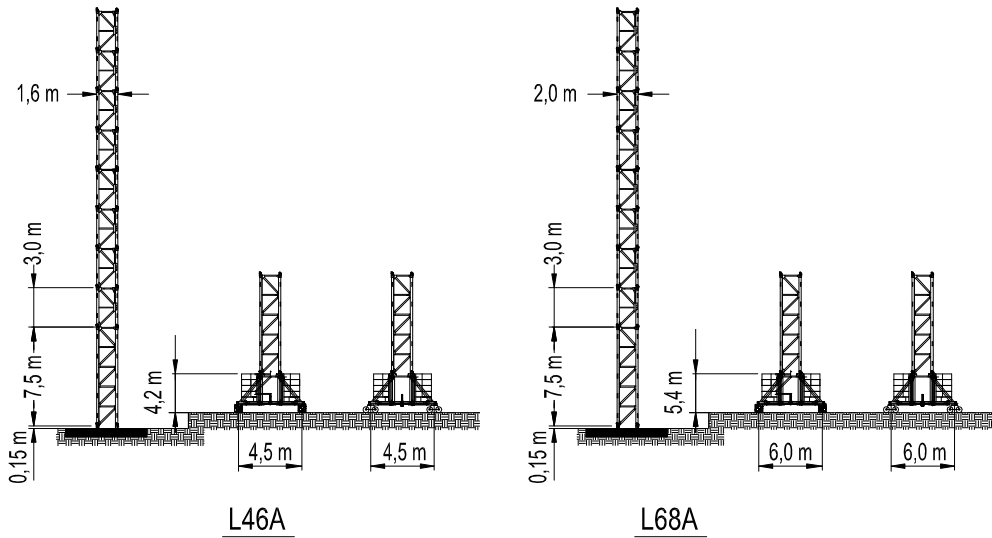
## 起重臂与平衡臂 Jib and Counter Jib



## 起重性能 Load Capacity

JIB 起重臂	Max.load 最大起重量		Jib Reach(m) 臂长(m)												
	t	m	15	18	20	23	25	30	35	40	45	50	55	60	
60m		5.00	23.3	5.00	5.00	5.00	5.00	4.50	3.71	3.10	2.65	2.30	2.02	1.79	1.60
		10.00	12.0	7.78	6.32	5.60	4.76	4.32	3.47	2.87	2.43	2.08	1.81	1.59	1.40
55m		5.00	25.3	5.00	5.00	5.00	5.00	5.00	4.05	3.42	2.93	2.55	2.25	2.00	
		10.00	13.3	8.75	7.18	6.37	5.44	4.94	4.00	3.34	2.84	2.46	2.15	1.90	
50m		5.00	27.7	5.00	5.00	5.00	5.00	5.00	4.54	3.78	3.25	2.83	2.50		
		10.00	14.5	9.50	7.89	7.01	5.99	5.45	4.42	3.70	3.15	2.73	2.40		
45m		5.00	29.2	5.00	5.00	5.00	5.00	5.00	4.82	4.00	3.44	3.00			
		10.00	15.2	10.00	8.20	7.39	6.32	5.75	4.67	3.91	3.34	2.90			
40m		5.00	29.7	5.00	5.00	5.00	5.00	5.00	4.90	4.20	3.50				
		10.00	15.4	10.00	8.40	7.51	6.43	5.85	4.75	3.98	3.40				
35m		5.00	30.9	5.00	5.00	5.00	5.00	5.00	5.00	4.30					
		10.00	16.2	10.00	8.80	7.91	6.77	6.16	5.01	4.20					
30m		5.00	30.0	5.00	5.00	5.00	5.00	5.00	5.00						
		10.00	16.5	10.00	9.07	8.06	6.88	6.27	5.10						

## 塔身 Tower

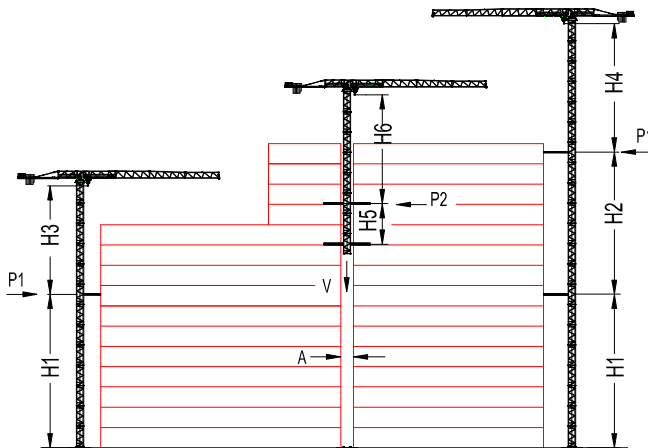


Tower configuration  
塔身组成

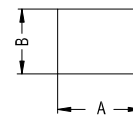
No. 序号	Tower 塔身	Base mast 基础节	Mast 标节	HH (m) 高度 (m)	Jib reach (m) 臂长 (m)
1	L46A	1	12	45.5	30-60
2	L68A	1	17	60.5	30-60

## 爬升 Climbing

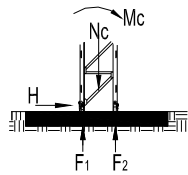
外爬式 External  
内爬式 Internal  
(仅举例) (example only)



Tower 塔身	L46A			L68A		
	m	In service 工作状态	Out of service 非工作状态	m	In service 工作状态	Out of service 非工作状态
		t	t		t	t
H1	33.0	—	—	48.0	—	—
H2	24.0	—	—	36.0	—	—
H3	33.5	—	—	48.5	—	—
H4	33.5	—	—	48.5	—	—
H5	15.0	—	—	18.0	—	—
H6	24.5	—	—	33.5	—	—
P1	—	8.9	21.2	—	9.0	27.6
P2	—	10.6	21.0	—	12.9	28.5
V	—	63.8	53.8	—	73.8	63.8
A	2.2			2.6		
B	1.8			2.2		



## 基础 Foundation



Static Crane  
固定式起重机

Tower 塔身	HH (m) 高度(m)	Jib reach (m) 臂长(m)	Foundation loadings 基础载荷			Corner forces 地脚反力	
			Mc (kN.m)	Nc (kN)	H (kN)	F <sub>1</sub> (kN)	F <sub>2</sub> (kN)
L46A	45.5	60	3202	595	97.3	-1266	1564
L68A	60.5	60	5250	738	144	-1672	2040

## 运输 Shipping

Tower 塔身	HH (m) 高度 (m)	Container QTY 集装箱数量			
		FR	40'OP	40'HQ	20'GP
L46A	45.5			5	1
L68A	60.5			6	1

## 机构性能 Mechanisms Specification

机构性能 Mechanisms Specification									KW		
起升 Hoisting		37LVF25	m / min	72.2	54.1	36.1	36.1	27.0	18.0	450 m	37
			t	2.1	3.1	5.0	4.6	6.4	10.0		
		55RCS25	m / min	85.0	42.0	42.0	42.0	21.0		500 m	40.5
			t	2.0	5.0	5.0	10.0				
变幅 Trolleying		4T3V4	m / min	0 - 58						95Nm	
回转 Slewing		RZV75x2	r / min	0.64						75Nm x 2	
行走 Travelling		4RTVF4	m / min	22						4 x 4	
电源 Power Supply			380V 50Hz / 440V 60Hz								
总功率 Necessary Electric Power			50.6 kVA / 54.7 kVA								

\*数据可能有所调整，以产品说明书为准。

\*Relative parameter might be adjusted. Final parameter is subject to its instruction manual.

公司地址：沈阳市沈河区青年大街 35 号 邮编：110014

H. Office: No. 35 Qingnian Street, Shenhe District,  
Shenyang, 110014 P.R. China

工厂地址：沈阳市东陵区榆林南路 7-2 号 邮编：110045

Factory: No. 7-2 Yulin Nan Road, Dongling District,  
Shenyang, 110045 P.R. China

电话 (Tel) : +86-24-22745018 传真 (Fax) : +86-24-22745017

Email: useter@hotmail.com

http://www.useter.com