

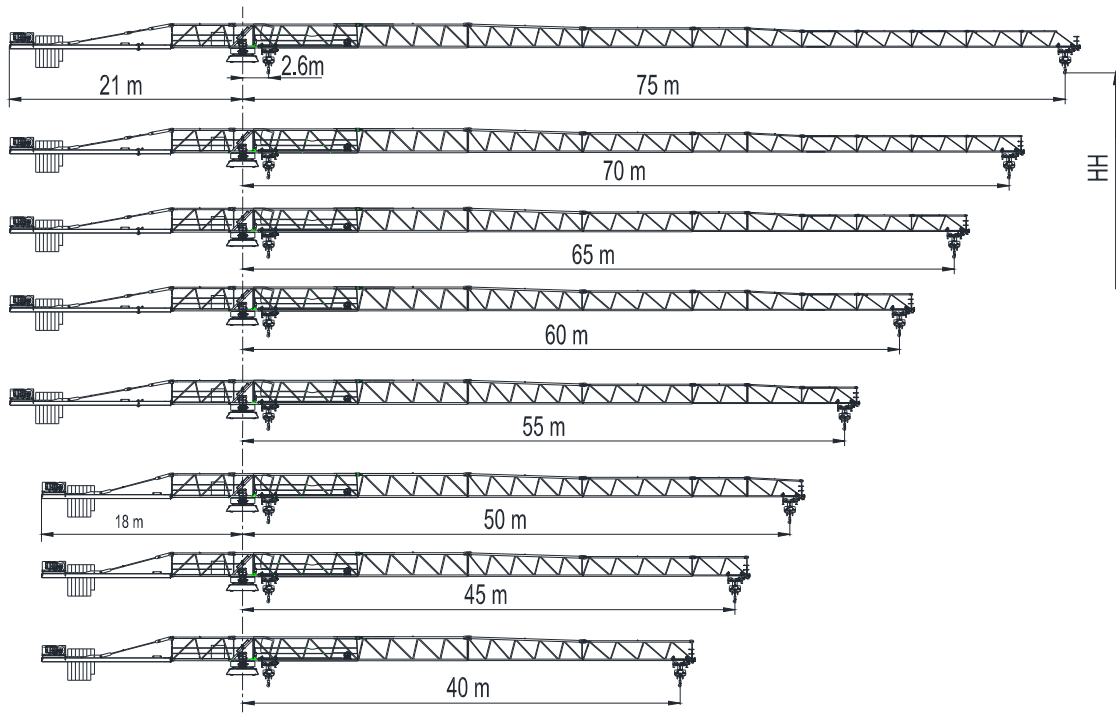
JT302-12 平头式起重机 Topless Crane

辽宁连云建筑机械有限公司
LIAONING LIANYUN BUILDING MACHINERY CO.,LTD.



沈阳优势特起重机有限公司
Useter Cranes Co., Ltd.

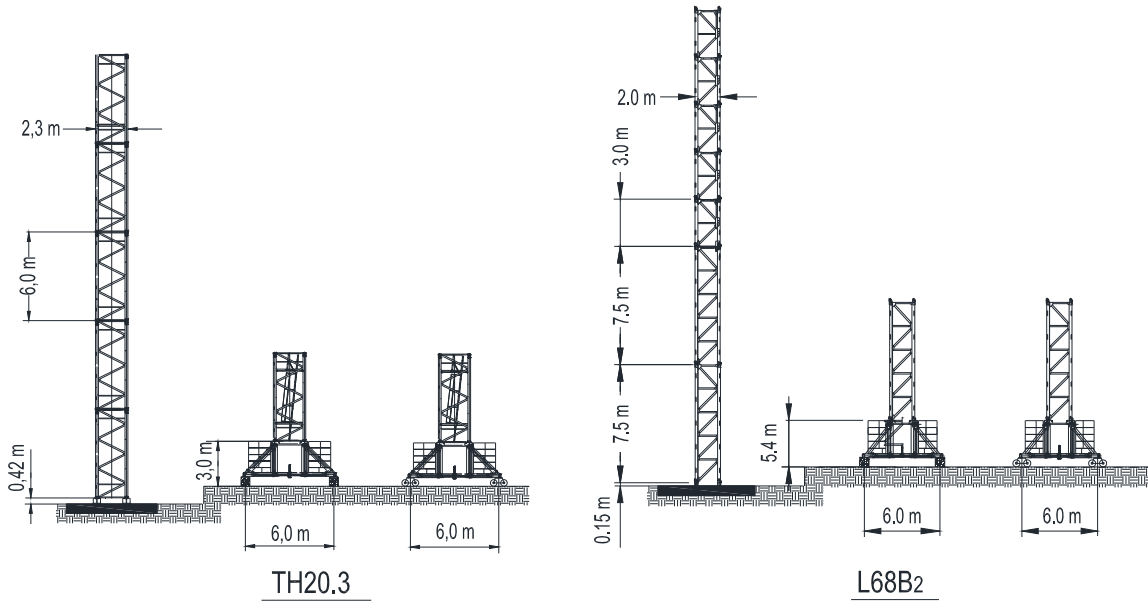
起重臂与平衡臂 Jib and Counter Jib



起重性能 Load Capacity

JIB 起重臂	Max.load 最大起重重量		Jib Reach(m) 臂长(m)													
	t	m	15	20	25	30	35	40	45	50	55	60	65	70	75	
75m		6.00	37.8	6.00	6.00	6.00	6.00	6.00	5.27	4.58	4.03	3.58	3.21	2.90	2.63	2.40
		12.00	18.9	12.00	11.44	8.82	7.68	7.10	4.99	4.30	3.75	3.29	2.92	2.60	2.33	2.10
70m		6.00	40.2	6.00	6.00	6.00	6.00	6.00	6.00	5.28	4.67	4.17	3.75	3.40	3.10	
		12.00	21.3	12.00	12.00	9.97	8.08	6.74	5.74	4.97	4.36	3.86	3.45	3.10	2.80	
65m		6.00	42.3	6.00	6.00	6.00	6.00	6.00	6.00	5.70	5.05	4.51	4.07	3.70		
		12.00	23.3	12.00	12.00	10.88	8.84	7.40	6.34	5.51	4.85	4.32	3.88	3.50		
60m		6.00	45.0	6.00	6.00	6.00	6.00	6.00	6.00	6.00	5.32	4.76	4.30			
		12.00	24.2	12.00	12.00	11.43	9.30	7.79	6.68	5.81	5.13	4.57	4.10			
55m		6.00	46.5	6.00	6.00	6.00	6.00	6.00	6.00	6.00	5.58	5.00				
		12.00	25.0	12.00	12.00	12.00	9.74	8.17	7.00	6.10	5.38	4.80				
50m		6.00	48.6	6.00	6.00	6.00	6.00	6.00	6.00	6.00	5.80					
		12.00	25.8	12.00	12.00	12.00	10.10	8.48	7.27	6.34	5.60					
45m		6.00	45.0	6.00	6.00	6.00	6.00	6.00	6.00	6.00						
		12.00	26.5	12.00	12.00	12.00	10.49	8.81	7.56	6.60						
40m		6.00	40.0	6.00	6.00	6.00	6.00	6.00	6.00							
		12.00	26.8	12.00	12.00	12.00	10.54	8.85	7.60							

塔身 Tower

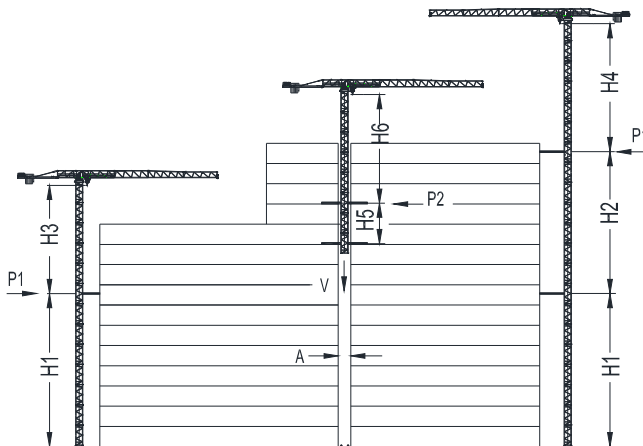


Tower configuration
塔身组成

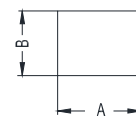
No. 序号	Tower 塔身	Base mast 1 基础节 1	Base mast 2 基础节 2	Adapter 过渡节	Mast 标节	HH (m) 高度 (m)	Jib reach (m) 臂长 (m)
1	TH20.3				10	59.0	40-75
2	L68B2	1	1	1	12	51.5	40-75

爬升 Climbing

外爬式 External
内爬式 Internal
(仅举例) (example only)

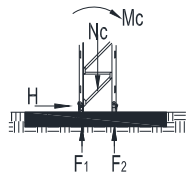


Tower 塔身	TH20.3			L68B2 带过渡节 L68B2 with adapter		
	m	In service 工作状态 t	Out of service 非工作状态 t	m	In service 工作状态 t	Out of service 非工作状态 t
H1	47,2	—	—	40,5	—	—
H2	36,0	—	—	24,0	—	—
H3	51,8	—	—	35,0	—	—
H4	51,8	—	—	35,0	—	—
H5	14,0	—	—	14,0	—	—
H6	32,8	—	—	21,0	—	—
P1	—	23,0	26,0	—	14,8	21,3
P2	—	22,0	25,0	—	16,2	26,4
V	—	100,0	90,0	—	89,1	77,1
A	2,6			2,6		
B	2,6			2,2		



基础

Foundation



Crane on foundation plate
起重机在固定基础上

Tower 塔身	HH (m) 高度(m)	Jib reach (m) 臂长(m)	Foundation loadings 基础载荷			Corner forces 地脚反力	
			Mc (kN.m)	Nc (kN)	H (kN)	F ₁ (kN)	F ₂ (kN)
TH20.3	59.0	75	6650	865	178.9	-2135	2559
L68B2	51.5	75	5505	833	164.3	-1738	2154

运输

Shipping

Tower 塔身	HH (m) 高度 (m)	Container QTY 集装箱数量			
		FR	40'OP	40'HQ	20'GP
TH20.3	59.0			12	1
L68B2	51.5			10	

机构性能 Mechanisms Specification

机构性能 Mechanisms Specification								KW		
起升 Hoisting		m / min	86.0	64.5	43.0	43	32.2	21.5	500 m	55
		t	2.8	3.8	6.0	5.6	7.6	12.0		
		m / min	70.4	52.8	35.3	35.2	26.4	17.6	450 m	45
		t	2.5	3.8	6.0	5.0	7.6	12.0		
变幅 Trolleying		m / min	63						185Nm	
			65						5.5	
回转 Slewing		r / min	0.67						95Nm x 3	
行走 Travelling		m / min	25						5 x 4	
电源 Power Supply		380V 50Hz / 440V 60Hz								
总功率 Necessary Electric Power		80.0 KVA / 67.0 KVA								

*数据可能有所调整，以产品说明书为准。

*Relative parameter might be adjusted. Final parameter is subject to its instruction manual.

Useter Cranes Co., Ltd.

H. Office: No. 35 Qingnian Street, Shenhe District,
Shenyang, 110014 P.R. China

Tel: +86-24-22745018

Fax: +86-24-22745017

Email: useter@hotmail.com

<http://www.useter.com>

LIAONING LIANYUN BUILDING MACHINERY CO., LTD.

Add: .5 technology industry zoo ,TieLing ,
Liaoning ,china

Tel: 0086 24 22517887

Fax: 024-22522837

Mail: 445811569@we.com